

Victoria Place // Honolulu, HI

Products Supplied:

- Frameless Series Shower Enclosures

Images Courtesy of Ward Village



Project Case Study

Elevated Shower Enclosure Solutions for Victoria Place at Ward Village

Objectives

Challenges

Solutions

HMI Glass Multi-Unit Division supplied custom shower door solutions for Victoria Place at Ward Village, a 40-story luxury residential tower within the Howard Hughes Holdings master-planned community between downtown Honolulu and Waikiki. Designed to deliver an elevated residential experience with panoramic ocean and Diamond Head views, resort-style amenities, and indoor-outdoor living spaces, the project required premium shower enclosures that matched its luxury standards while performing in Hawaii’s coastal environment. HMI Glass incorporated Guardian Glass ShowerGuard® glass throughout the project to help resist corrosion, staining, and discoloration while reducing maintenance and preserving long-term clarity.

Project Details

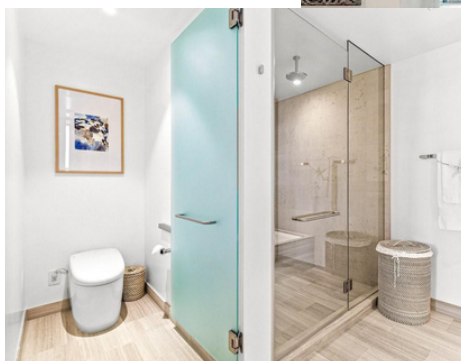
- Brand: *Victoria Place*
- Property Type: *New Construction, Ultra-Luxury Condos*
- Room Count: *350 units*
- Product Supplied: *HMI Frameless Series Shower Doors*
- Completion Date: *2024*



Photo Credit: Ward Village

Project Team

- Owner: *Howard Hughes Holdings*
- Developer: *Howard Hughes Holdings*
- Architect: *Solomon Cordwell Buenz*
- Interior Design: *Tihany Design*
- General Contractor: *Hawaiian Dredging Construction Company, Inc.*
- Glazing Contractor: *Kalu Glass*



Key Benefits

- Domestic Manufacturing
- Unparalleled Service
- Fast Leadtimes

